

# Kowhainui Village in **Edith Collier Drive**

---

Opened in 2013, Edith Collier Drive boasts 17 modern, purpose built brick townhouses with private courtyards, set amongst established rose gardens.

Each two bedroom townhouse includes:

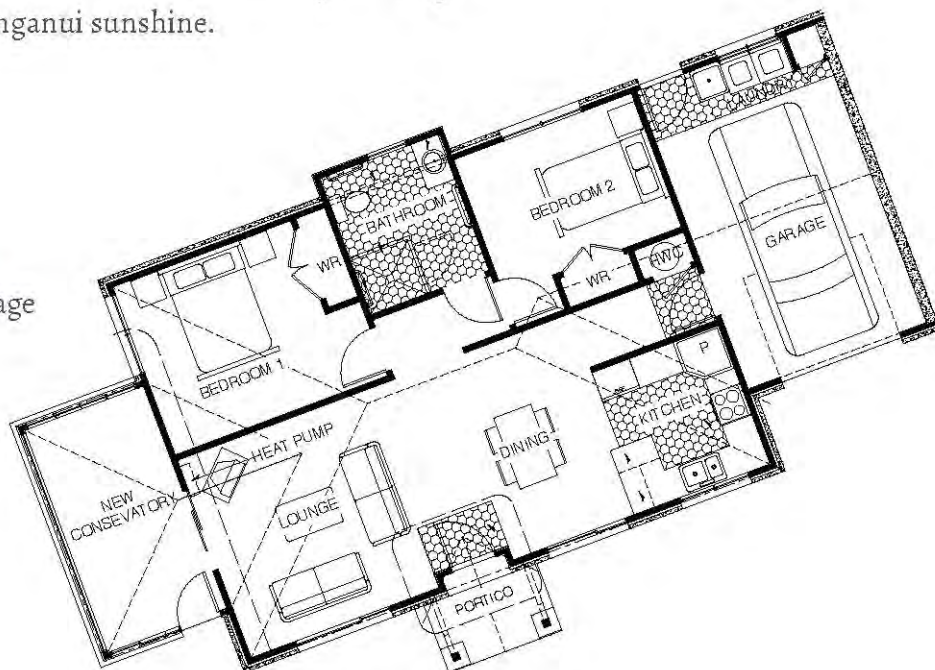
- an open plan living space including lounge, dining and kitchen
- a modern kitchen complete with oven, hob, rangehood and dishwasher
- a heat pump/air conditioning unit
- full insulation and double-glazed windows
- a modern, wet-floor bathroom
- ample storage and double wardrobes
- an internal access garage
- a private courtyard/garden area
- quality carpet and slip resistant vinyl flooring
- connections for telephone, internet and digital TV
- quality curtains or blinds.

Many Edith Collier Drive townhouses also include a conservatory allowing residents to make the most of the Whanganui sunshine.

## **Typical two bedroom townhouse**

Approx. living area: 82 to 90 m<sup>2</sup> plus garage

Approx. deck/porch area: 6 to 19 m<sup>2</sup>



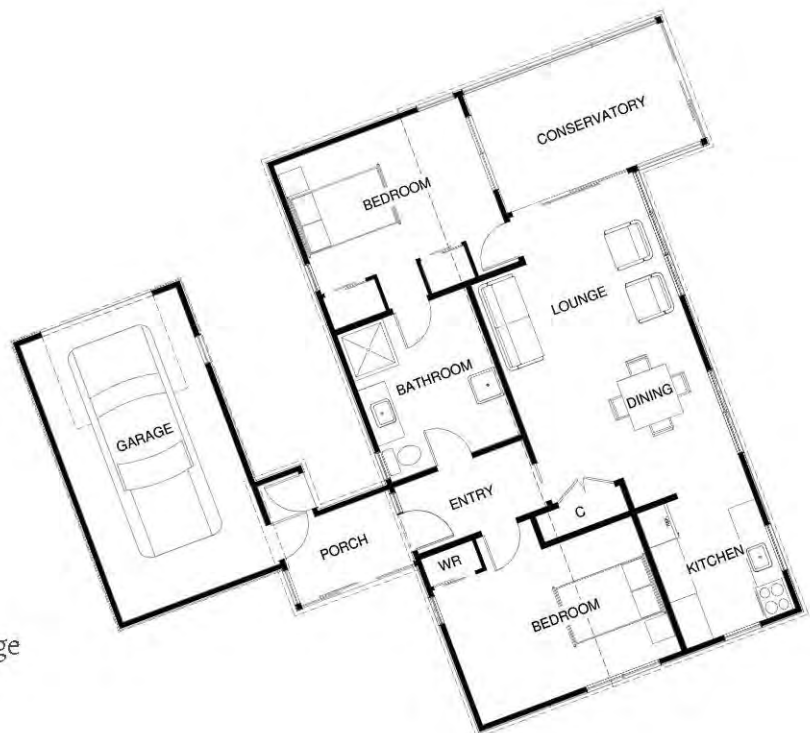
# Kowhainui Village in **Kowhainui Drive**

---

Opened in 1988, the 16 boutique villas of Kowhainui Drive are a popular option for retirees who enjoy the private garden areas and beautiful park-like surroundings.

Each refurbished two bedroom villa includes:

- an open plan lounge and dining room
- a renovated kitchen complete with oven, hob and dishwasher
- a heat pump/air conditioning unit
- a modern, wet-floor bathroom
- ample storage and double wardrobes
- a garage
- a private garden area
- quality carpet and slip resistant vinyl flooring
- connections for telephone, internet and digital TV
- quality curtains or blinds.



## **Typical two bedroom villa**

Approx. living area: 92 to 96 m<sup>2</sup> plus garage